

Model: MB-UB4

Under-belt mounting

DESCRIPTION

The MB-UB4 underbelt mounting assembly facilitates installation of the model RH, R21 or R22 wheeled encoders under the conveyer belt (or roller) as shown in figure 1. The Y-4 yoke provides a pivot point that allows the up/down and some sideways movement of the encoder with the conveyer belt while the springs assure constant contact of the wheels to the conveyor. The pivot point and Y-4 yoke are centered on the encoder to automatically optimize alignment with the conveyor. Nylon washers are included to accommodate the thinner handle on the R21 and R22 wheeled encoders.

INSTALLATION

1. Assemble the MB-UB4 components onto the encoder as shown in figure 2. Note: when ordered with an encoder as an assembly, the MB-UB4 is preassembled onto the encoder to simplify installation.
2. Bolt the Y-4 yoke to the mounting beam (not supplied) using the 3/8-16 hex cap screw and lock washer supplied. The Y-4 should be perpendicular to the conveyor belt with the pivot point below the belt as shown in figure 1, and positioned so it is aligned with the belt. The greatest pressure is applied when the pivot point is closest to the belt. **Caution:** If the encoder is not well aligned with the belt, premature wheel wear will result.
3. Make sure the encoder has unobstructed up/down movement.
4. Attach the cable so the cord is clear of the pivot point and sharp edges, and with sufficient slack to allow for expected up/down and some sideways movement.

PARTS LIST

The MB-UB4 includes these parts (See figure 2)			
#	Description	Part No.	Qty
1	1.5" x 1/4" pins	500-MCH096A	2
2	Brass bushing	500-MCH041	1
3	Nylon bushing	550-MSC007	3
4	Nylon shoulder washer	550-MSC008	2
5	2.5" x 3/8" spring	500-MSC009	2
6	7/32" E-ring	550-RNG010	4
7	3/4" Clevis pin	550-MSC004	1
8	Cotter pin	550-MSC005	1
9	Pivot yoke	500-MCH093A	1
10	3/8" Lock Washer	550-WSH005	1
11	3/8"-16 Cap Screw	550-SCR303	1
	Nylon Washers	550-WSH006	4

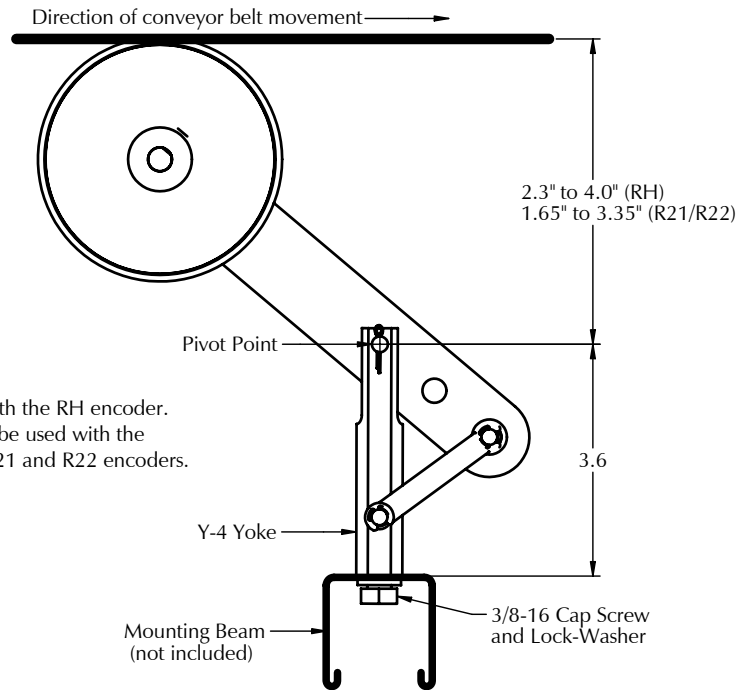


Figure 1: MB-UB4 Assembly (shown with RH wheeled encoder)

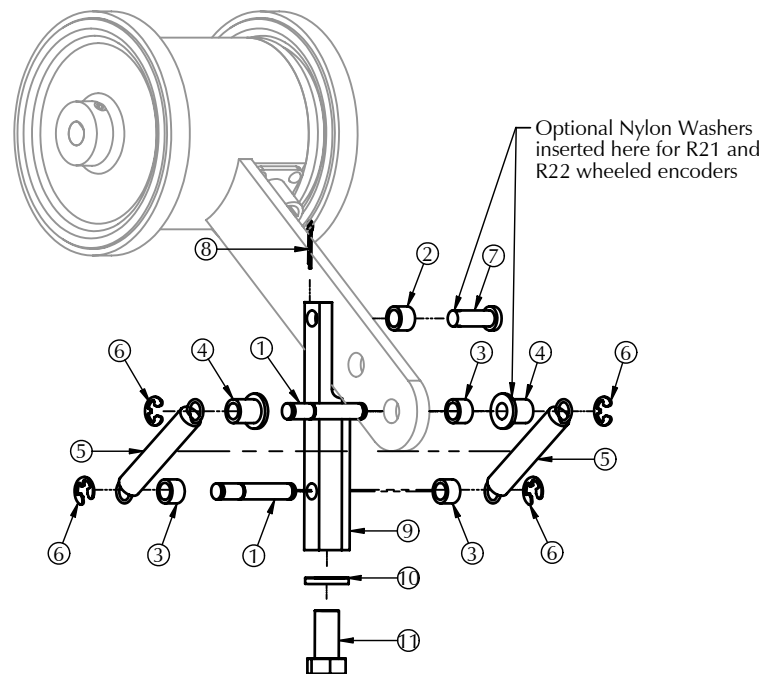


Figure 2: MB-UB4 Component Detail



602 E. North Street 630-365-7148
 Elburn, IL 60119, USA Fax: 630-365-7149
www.photocraftencoders.com